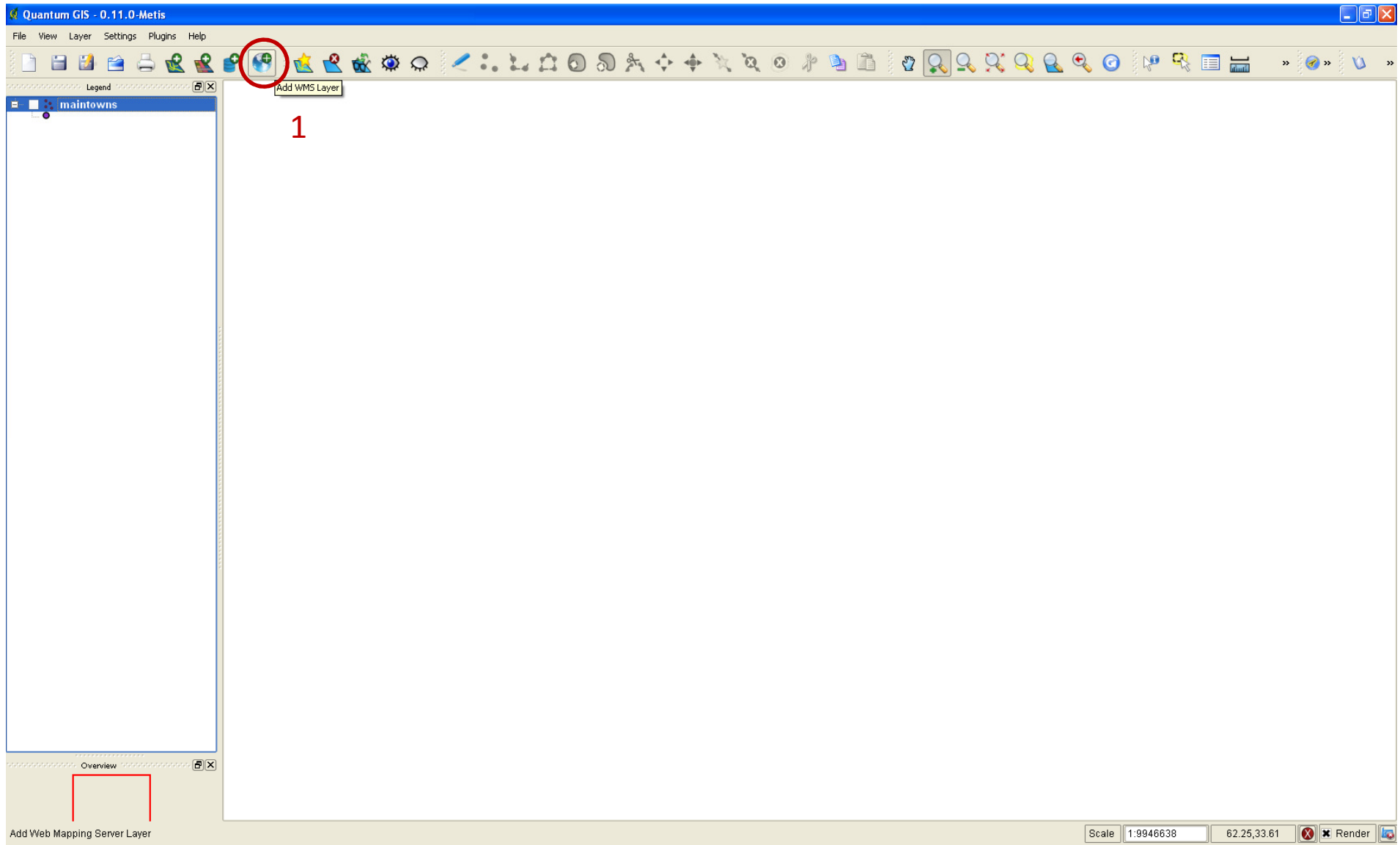
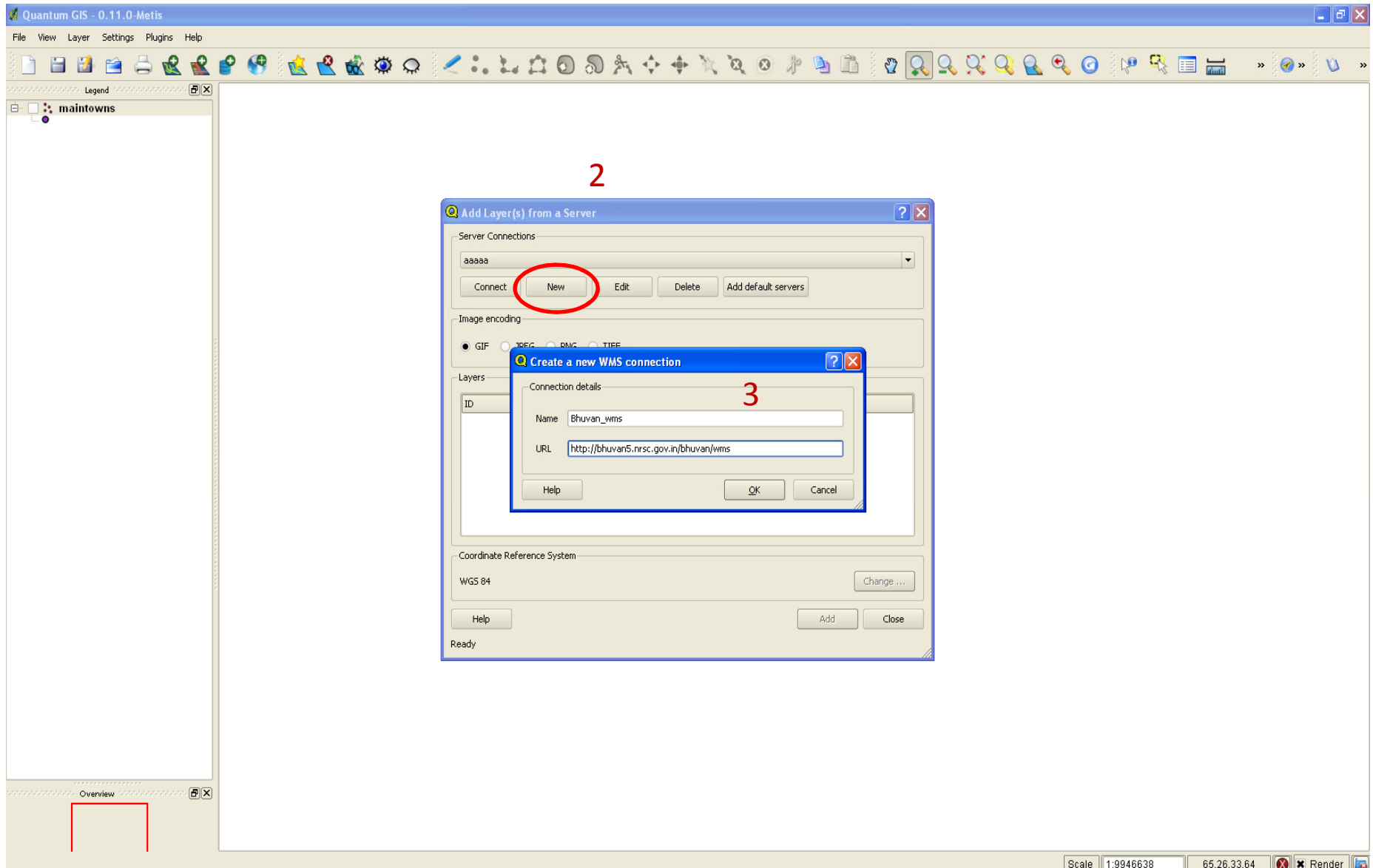


How to Consume Bhuvan OGC Webservices in QGIS -0.11.0 Metis

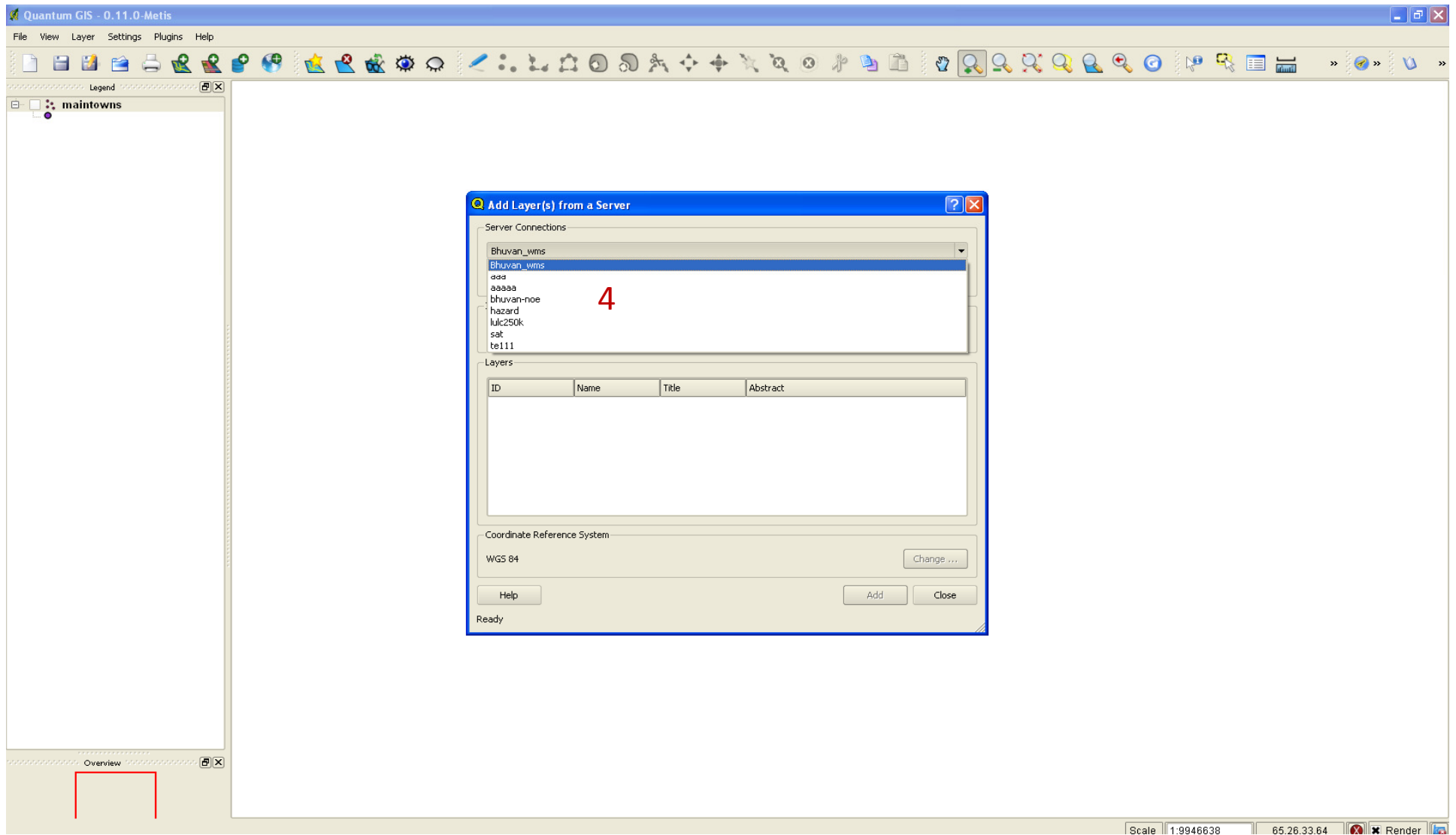


Step 1. Click the 'Add WMS layer' icon to make server connection and consume the service.

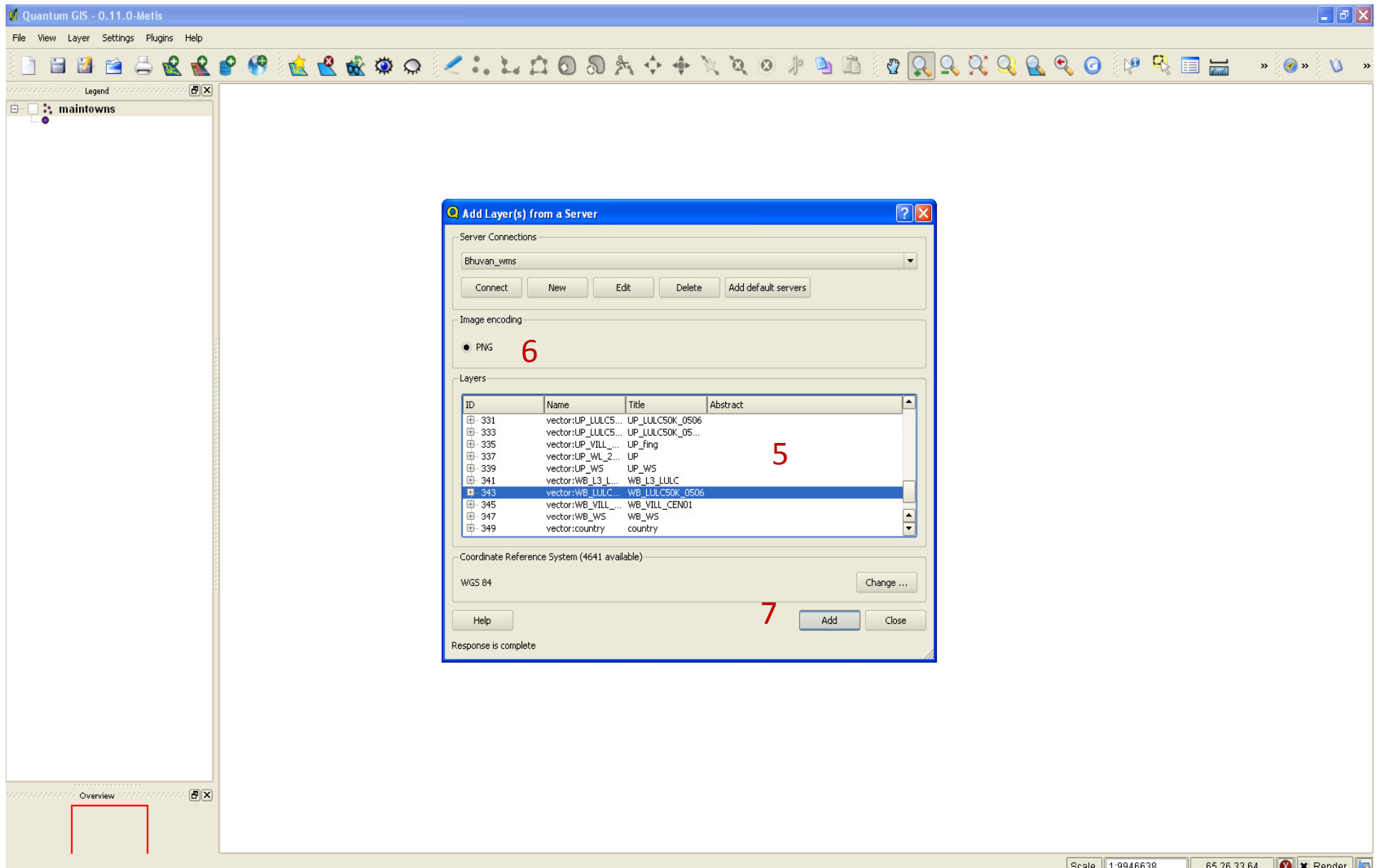


Step 2. User will get a 'Add Layer(s) from a server' panel

Step 3. Create New WMS connection by entering connection 'Name' and 'URL' and say OK.



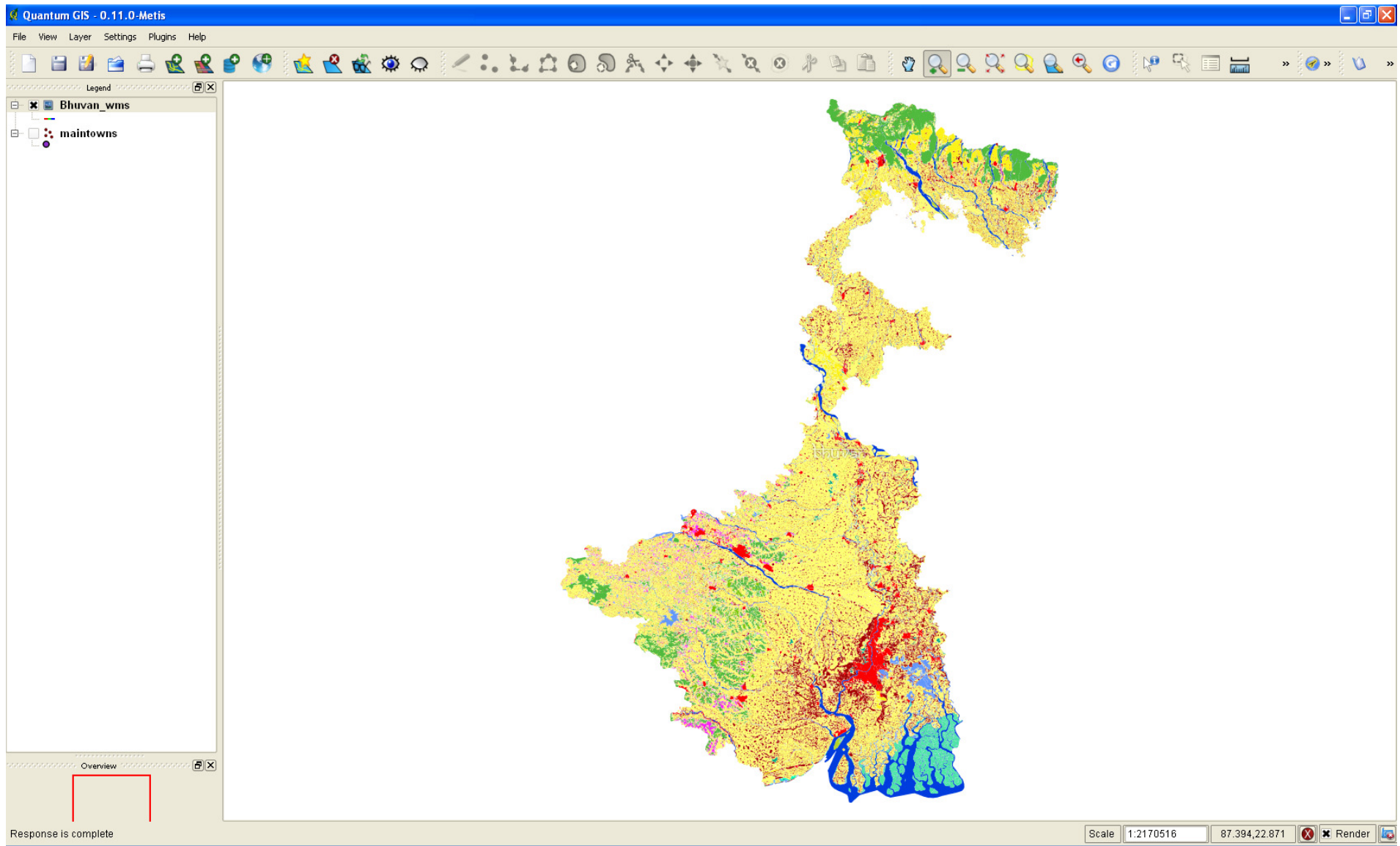
Step 4. Select Connection Name (Bhuvan_WMS) from the Server Connections drop down box and click 'Connect'



Step 5. QGIS now analyses the Bhuvan 'getcapability' and list out all the available layers. Select the layer that you wish to add.

Step 6. Change the image encoding as PNG

Step 7. Click 'Add' to add the selected layer to the map viewer.



West Bengal – Land Use Land Cover (1:50000) is available as Webservice in to the map viewer for visualization.

For further queries – please contact – bhuvan@nrsc.gov.in